

Amcorder Recording Ammeter

Collect and analyze load profiles

Patented open CT sensor with $\pm 1\%$ accuracy

Easily clamps to the line in seconds

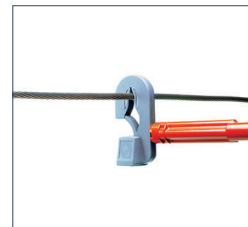
Recorded data quickly downloads into the user's PC

Softlink interface makes data analysis easy

Generate reports and create graphs for profile analysis



Hotstick Mounted



Universal Hotstick Adapter



The Amcorder uses the same sensor technology as the original Ampstik. The True RMS inductive sensor does not use magnetic materials and has no moving parts. The opening of the sensor is electronically closed and external currents are electronically rejected. The accuracy, external current reject, and range of currents measured by the patented amp sensor substantially exceed the performance of the best clamp-on sensors. The key feature of the unit is the ability to leave it deployed on the line to record average current readings every 15 minutes for 30+ days. It easily attaches to the line with a standard shotgun style hot-stick. Once on the line, it immediately begins to collect and record the current load on the line.

An Amcorder is equipped with an infrared serial port for communicating the recorded data into the user's PC. The data is downloaded through SensorLink's Softlink software, which allows the user to download, view and query the data stored on the Amcorder.

The housing of the Amcorder is made of urethane and is built to operate safely, even in severe utility environments. It is resistant to shock, repels water and is unsusceptible to flame. It also operates within a wide temperature range. The Amcorder has a urethane carabiner latch assembly, which allows it to hang on the line securely in all weather conditions.

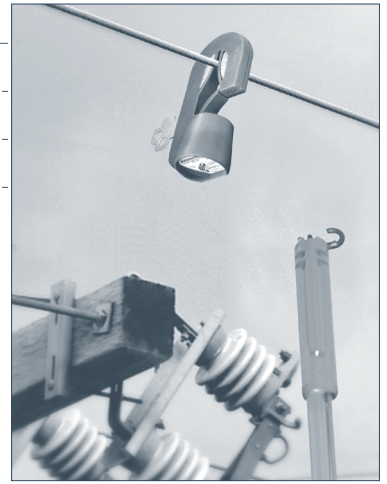
Softlink is a user-friendly software interface that allows the user to download, view, graph and export data from the Amcorder into Microsoft Excel. The data directly transfers from the Amcorder into Excel through an Infrared Port. Microsoft Excel not included.

Applications

Check for load balance

Conduct load studies

Meter Verification



Amcorder Recording Ammeter

Model Number	6-920
Type	Amcorder Kit 3 Amcorders IrDA Serial Cable Softlink Software Carrying Case
Range of Operation	
Voltage	69kV
Current	1 to 1000A
Sensor Opening	Up to 1.3 in (up to 3.3 cm)
Resolution	
Amps 0-99A	1A
Amps 100-1000A	1A
Accuracy	±1% +2 counts
Frequency	60 Hz (57 to 63 Hz) or 50 Hz (47 to 53 Hz) Models Available
Mechanical	
Weight	1.5 lbs (.68 kg)
Dimensions	9.75 in x 4.75 in x 3 in (24.77 cm x 12.07 cm x 7.62 cm)
Operating Temp.	-4 to +140 degrees F (-20 to +60 degrees C)
Housing	Shock & water resistant molded urethane
Hotstick mounting	Shotgun Style Hotstick
Battery	9 volt alkaline
Software Requirements	Microsoft Excel, Version 97 or higher. Excel not included.



Carrying Case



SensorLink® Corporation

techniCAL Systems 2002 Inc.

1436 Jacqueline Blvd., Hamilton, ON L9B 2R3

Toll Free 866-327-8731 (1-86-MEASURE-1)

phone 905-575-1941

fax 905-575-0386

www.technical-sys.com