

Series ZPH with USB Output High-Performance, Programmable, Digital, Push/Pull Force Gauge

Use USB
to Process
1,000 Data/Second
not just the peak!

- Process 1,000 data/second not just the peak
- USB, RS-232C, and Analog outputs
- Programmable high/low setpoints with color-coded LED indicators and output signal for go/no go testing
- 1,000 Data memory for computer download
- External switch display hold and clear
- lbf, kgf, and N units are selectable
- Runs on internal NI-MH batteries or AC adapter
- Heavy duty metal construction
- Capacity up to 1,100 lbf (for capacities under 220 lbf use ZP Series)
- Overload capacity 200% of F.S.
- Real time and peak mode (selectable)
- Overload alarm and output signal
- Low battery indicator
- Reversible display
- ZPH kits include a full set of accessories, AC adapter/ charger, carrying case, ZP Logger software, USB driver and USB cable.



ZPH Kit includes handles

USB Output - High Performance

ZPH digital force gauges are capable of processing 1,000 data/second, so force profiles can be analyzed for much more than just the peak. Collect peak data on your computer with the USB cable and ZP Logger (included) or 1,000 data/second with ZP Recorder (optional).

Main Features

ZPH gauges have programmable high/low setpoints for go/no-go testing. Orange lights up for measurements less than Low setpoint, green for between High and Low setpoint, and red for over High setpoint.

Use real time mode to display load transients, or peak mode to capture the peak force achieved during a test. Selectable lbf, kgf, or Newtons measuring units.

Store up to 1,000 values in memory and download to your computer using USB or RS-232C output.

ZPH gauges are sold in kits which include a hard plastic carrying case, AC adapter/charger, tension hook, four compression adapters, extension shaft and knurled steel handles, USB Driver and ZP Logger, and USB cable.

ZP Logger Software (included)

ZP Logger is a USB software utility that logs force values by pressing the Send button on the gauge, from either Peak or Real time modes. ZP Logger also downloads all values previously stored in gauge memory and saves in CSV format.

ZP Recorder Software (optional)

ZP Recorder is force data analysis software designed to interface with Imada ZPH Series (USB) force gauges. ZP Recorder records and processes 1,000 data per second (not just the peak) and generates a graph with statistics. Zoom into any part of the graph to see individual data points at intervals of 1mS. Mouse over data points to display their force value.

Further analysis can be done on the entire range or by selecting part of the graph to detect the first peak or generate statistics within that time interval. Compare and align multiple graphs. Save graphs or export data to CSV format.

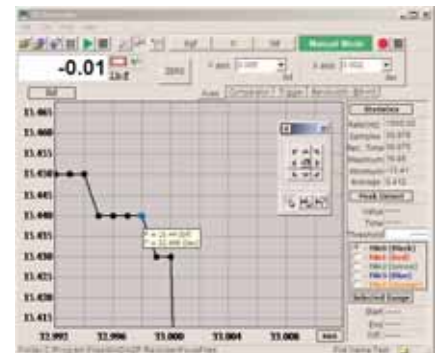
ZPH Specifications

Accuracy	± 0.2% ± 1 LSD
Selectable Units	Pounds, Kilograms or Newtons
Overload Capacity	200% of F.S. (Overload indicator flashes beyond 108% of F.S.)
Power	Rechargeable NI-MH battery pack or AC adapter
Battery Indicator	Display flashes BAT when battery is low
Memory	Non-volatile, recall up to 1,000 loads
Setpoints	Programmable high/low setpoints with color-coded indicators and output signal
Outputs	USB, RS-232C and ± 2 VDC analog output
Operating Temp.	32° to 100°F (0° to 40°C)

ZPH Ranges (Resolution) Accuracy: ±0.2% F.S. ±1 LSD

Model	Capacity (Resolution)		
	Pounds	Kilograms	Newtons
ZPH-440	440.0 lbf (0.1 lbf)	200.0 kgf (0.1 kgf)	2000 N (1 N)
ZPH-1100	1100 lbf (1 lbf)	500.0 kgf (0.1 kgf)	5000 N (1 N)

For capacities under 220 lbf use ZP series
Specifications subject to change without notice.



ZP Recorder screen showing zoom feature.